

A PROJECT BY :

CALLISTO
GROUP

 **CALLISTO**
TOPAZ

Callisto Topaz, Besides Altezza Eva, Near Celestial Garden Living ,
Next to Science Park, Shilaj, Ahmedabad - 380059

Contact : +91 99988 15079

RERA NO. PR/GJ/AHMEDABAD/DASKROI/Ahmedabad Municipal Corporation/MAA14407/141124/090928

 **luxury**
living
3BHK UPSCALE LIVING



#Elegantmodernstyle



#luxury



#nature



#tradition

Nestled in the heart of AHMEDABAD,
our luxury residential development
seamlessly blends traditional architecture
with modern elegance, surrounded by
nature's breathtaking beauty.



#Indulge
in complete



zsis Timberland TOPMAN H&M Massimo Dutti orsay pierre cardin VERSACE





CALLISTO
TOPAZ

STOP

#The Entrance 
to Elegance

#Ground floor plan





The happening *Outside*

Amenities *excellence*



GRAND ARRIVAL GETWAY



PLAYFUL KIDS PARADISE



SERENE SENIOR SIT OUT



TRANQUIL GREEN FIELDS



INVIGORATING YOGA DECK



CO-WORKING SPACE & LIBRARY



SCENIC JOGGING & WALKING PATH



SOCIAL GATHERING HALL



CHARMING GAZEBO DECK



VERSATILE SPORTS ARENA



FITNESS & WELLNESS CENTRE



OPEN AIR AMPHI-THEATRE



PICK UP AND DROP ZONE



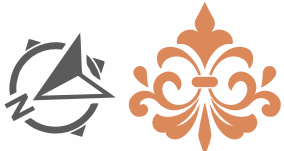
DYNAMIC GAME LOUNGE



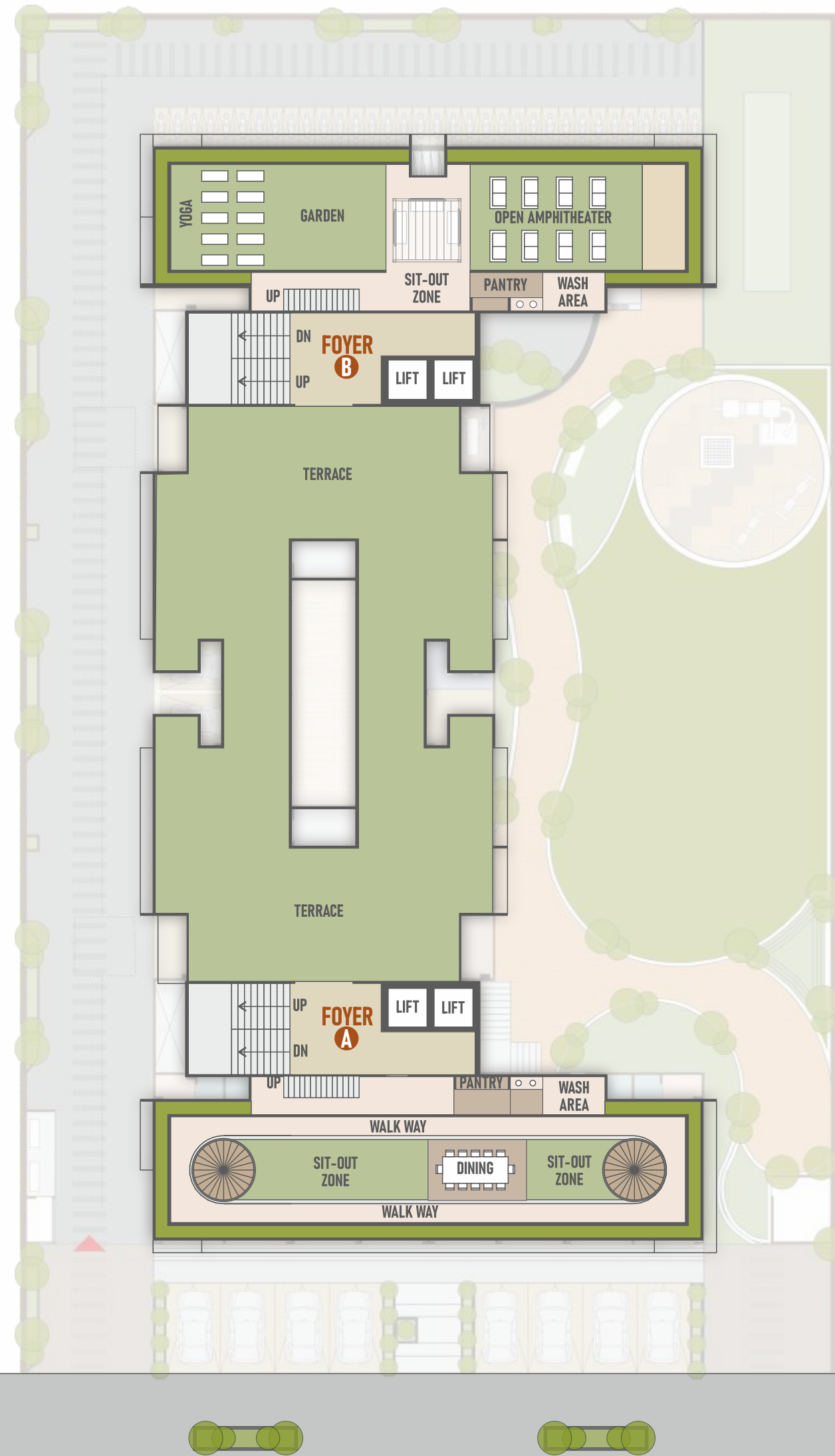
DG SET



#Typical floor plan



#Terrace floor plan



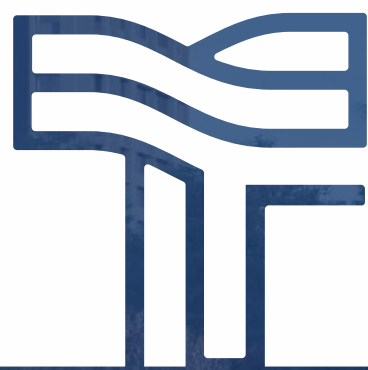
#Elegant Living
experience





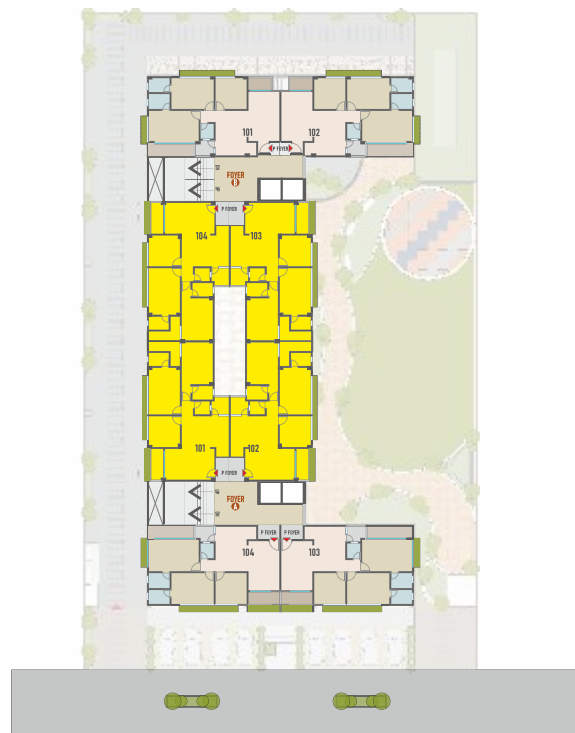
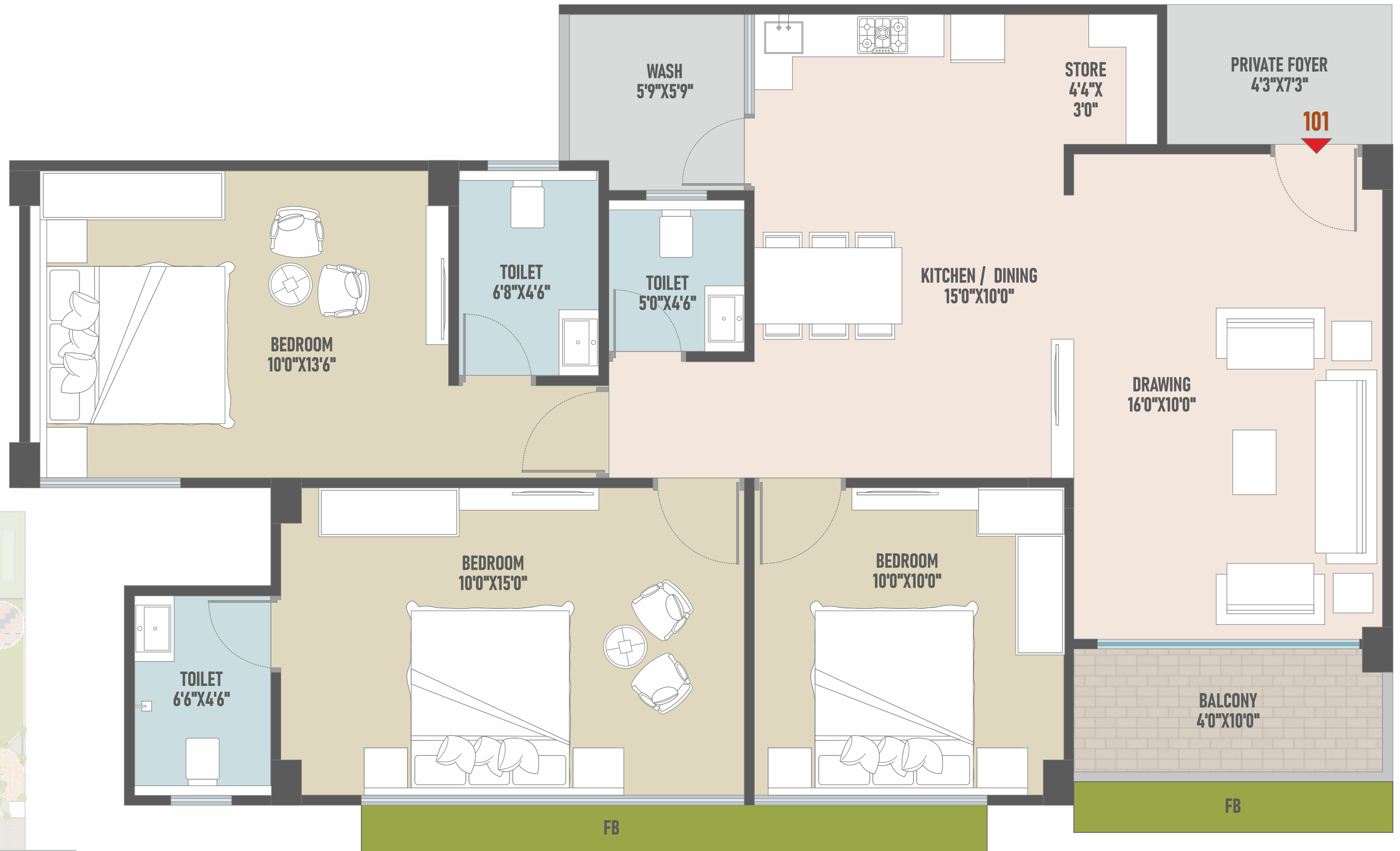
#Family

Create Lasting Memories in
Your Dream Home





3BHK TYPICAL UNIT PLAN TYPE A



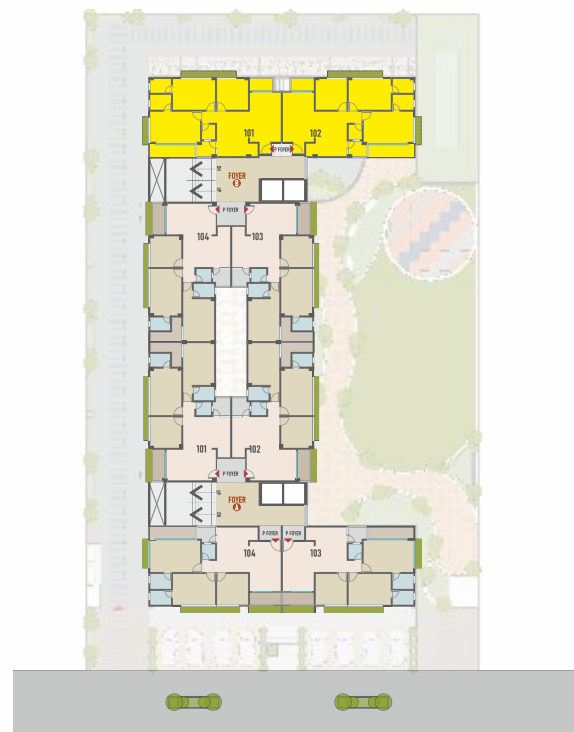


3BHK TYPICAL UNIT PLAN TYPE B





3BHK TYPICAL UNIT PLAN TYPE C



#The Lifestyle 
beyond imagination





#Find Peace 
in every corner

#The Unmatched 
enjoyment



#Specifications *grandness*



STRUCTURE :

- RCC Frame Structure As Per IS Code Considering Earthquake Resistance.



WALL FINISH :

- Masonry Wall Off AAC Blocks.
- Internal Wall - Smooth Plaster With Two Coats Of White Putty.
- External Wall - Double Coat Plaster With Texture Finish Or Sand Face Plaster.



FLOORING AND DADO TILES :

- Living - Dining - Kitchen - Bedrooms 48"x24" Or 32"x32" Double Charged Imported Tiles Upto Beam Bottom Level.
- Bath Area - Non Slippery Flooring.
- Kitchen - Premium Tiles Upto Beam Bottom In Kitchen.
 1. Sandwiched Platform With Granite Top & S.S Sink.
 2. Store With Kota Shelves.
- Wash area - Kota Stone Flooring And Glazed Tiles Dado.



ELECTRIFICATION :

- Modular Electrical Accessories And Centralised Distribution Board With MCB For Safety Protection.
- A.C. Points In All Bedroom & Living Room.
- Concealed And Fire Resistant Copper Wiring With A.C., T.V., Geyser, Water Purifier, Washing Machine And Refrigerator Points.
- Appropriate Earthing And Lighting Protection.



DOOR :

- All Wooden Doors Are Of Purely Pinewood Material.
- Decorative Wooden Main Door Designer Hardware Fittings.
- Other Doors Are Wooden Flush Doors With Locks And Wooden Frames.
- Video Door Camera At Main Door.



WINDOWS :

- Large Windows For Special Attention To Views With Ample Natural Lights And Ventilation.
- Fully Glazed Powder Coated Aluminum Sliding window With Bottom Stone Sill.



PLUMBING:

- Suspended Plumbing For Easy Maintenance.

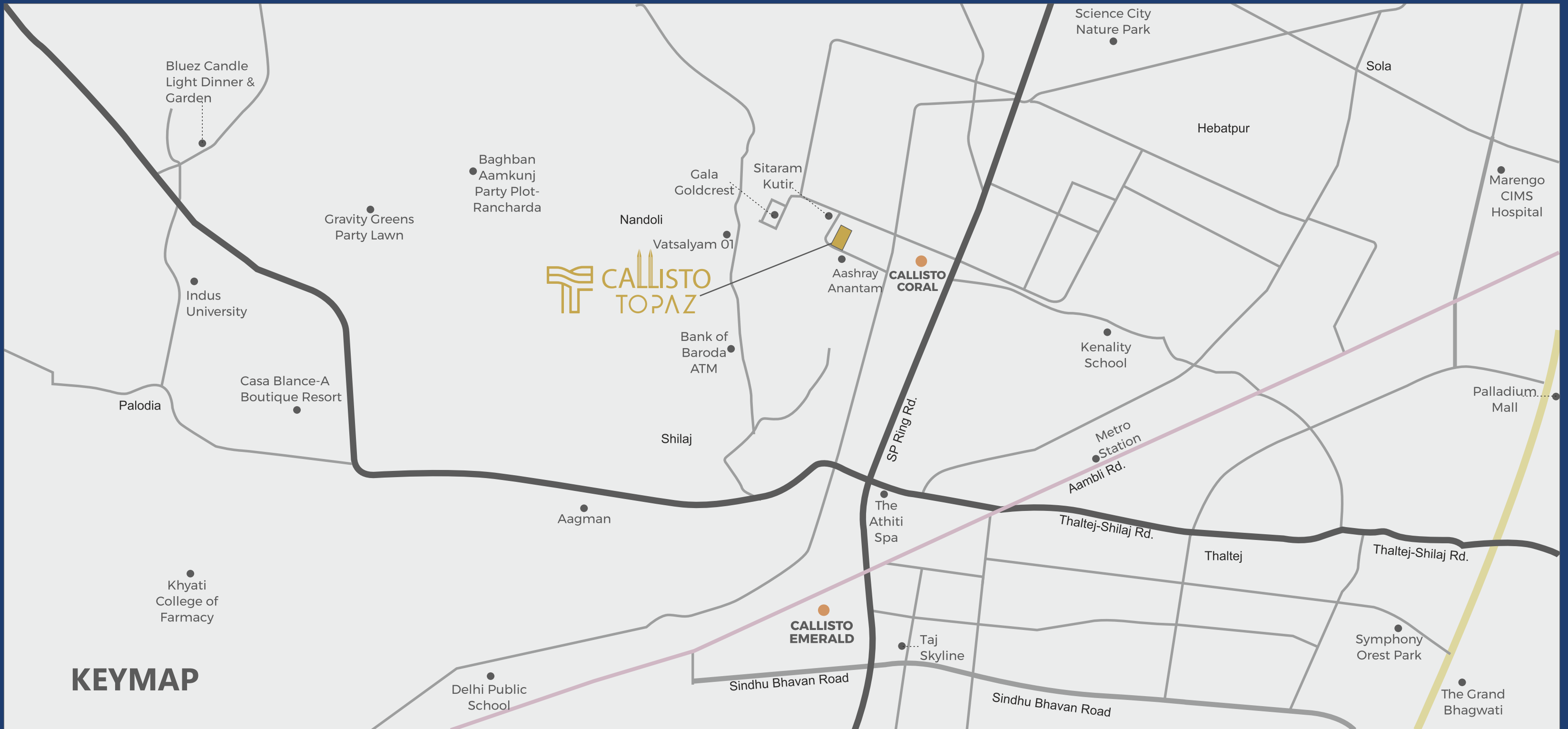
SALIENT FEATURES

- 24X7 SECURITY WITH CCTV MONITORING
- FREE ALLOTTED PARKING
- DG BACKUP POWER
- SOLAR PANEL SYSTEM FOR COMMON LIGHTING
- VIDEO DOORBELL
- LETTERBOX
- FIRE SAFETY COMPLIANT
- SPACIOUS ENTRANCE FOYER IN EACH TOWER
- DECORATIVE NAMEPLATE
- FIRE ALARM ON EACH FLOOR
- SECURITY SYSTEM
- 24X7 WATER SUPPLY



BRANDS WE USE (OR EQUIVALENT)

STEEL	
CEMENT	
FLOORING	
WINDOWS	
BATHROOM	
ELECTRIC	
SWITCHES	
ELEVATORS	
PUTTY	
PAINT	
PLUMBING	
GLASS	



KEYMAP



Callisto Topaz, Besides Altezza Eva, Near Celestial Garden Living ,
Next to Science Park, Shilaj, Ahmedabad - 380059

Contact : +91 99988 15079

Architect



RERA REGISTRATION NO.
RERA WEBSITE : www.gujrera.gujarat.gov.in
RERA NO. PR/GJ/AHMEDABAD/DASKROI/Ahmedabad Municipal Corporation/MAA14407/141124/090928

• Good environment is the main Feature of the Society. • This Brochure is just for an easy presentation of the project and should not be treated as a legal document. • The entire dimensions given are approximate & unfinished. • Irregular payment cause for cancellation of the booking, refund would be given only after the said apartment has been resold (payment received form new purchaser & that to after deducting the cancellation charge.) • The details, facts specification & figures mentioned are compliance for information purpose only and are subject to modification / compliance require as Rera act. • Applicable stamp duty, registration charges, legal expenses, GST at applicable rate or any taxes levied by the government authority are to be borne by members. • Subject to Ahmedabad Jurisdiction. • Total payment by Cheque / DD of NEFT or RTGS in favour of "CALLISTO DEVELOPERS"